

## Part Change Notice

**Date: Oct. 23, 2015**

**PCN. No: 1514010**

### Products:

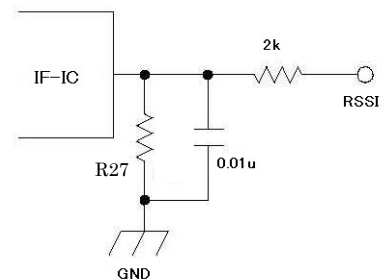
STD-302S 434 MHz

### Description of change

- R27 value change 18 kohm -> 22 kohm

RSSI curve (characteristics) change. Refer to the figure attached.

\*RSSI specifications (value at -113 dBm) remain unchanged.



### Reason of change:

- To make RSSI curve as close as possible with that of STD-302N-R.

### Cost Impact:

- NIL

### Change schedule:

- STD-302S 434 MHz with new RSSI curve: S/No. 3701 or later

RSSI typical value

